

Here to There and Me and You

Design a Neighborhood



Some bridges, like those in the book *Here to There and Me to You*, connect neighborhoods, which turn strangers into friends. Using the grid below, create a neighborhood map. Your neighborhood must include buildings, roads, bridges, and bodies of water.

Buildings: 3 Houses
School
Store
Library

Each house must be 4 squares
The school must be 10 squares
The store must be 6 squares
The library must be 6 squares

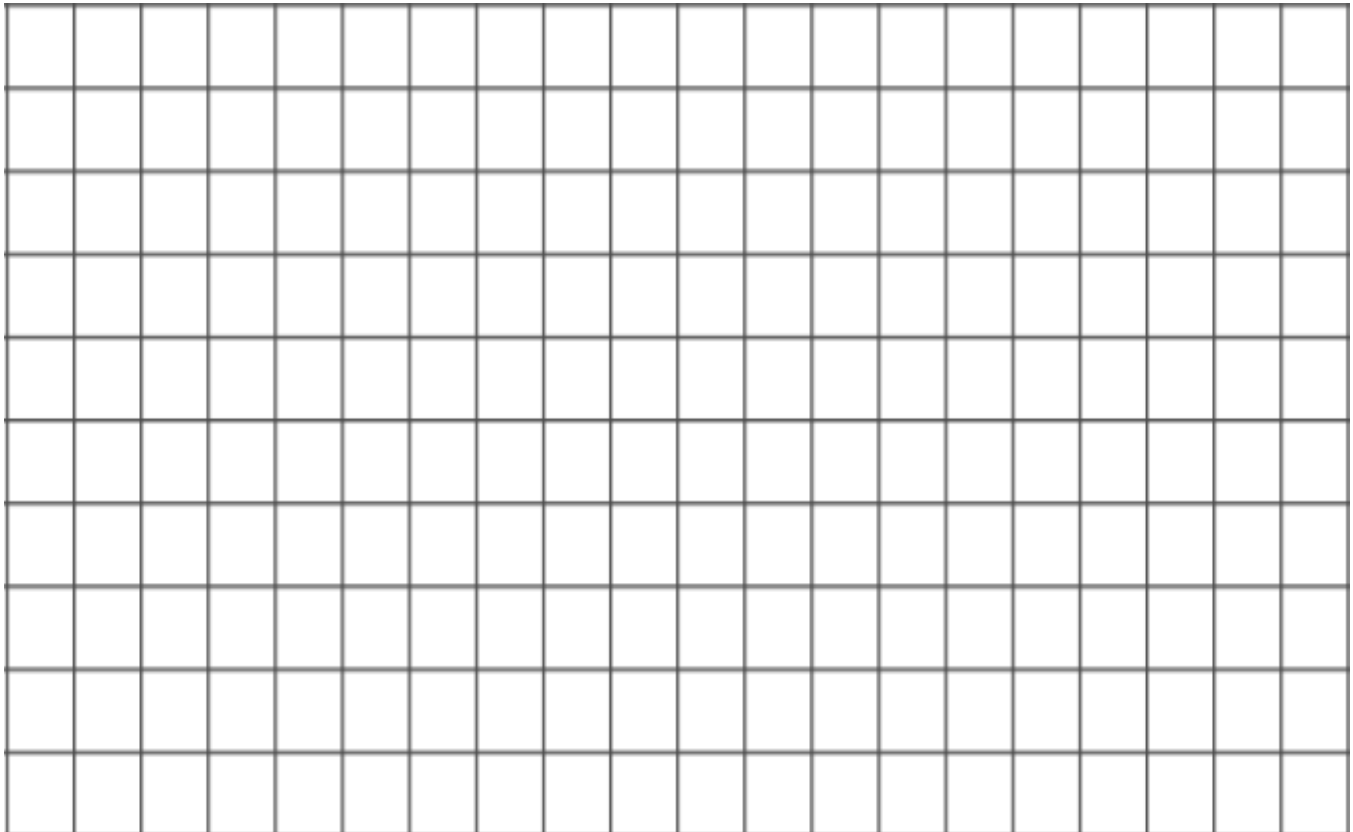
Color the houses yellow
Color the school red
Color the store orange
Color the library green

Roads and Bridges:

Your neighborhood must have at least 4 roads and 2 bridges. Create a name for each road and bridge; be sure to label it on your drawing.

Bodies of Water:

Include at least one river and one pond in your neighborhood. Color them blue.



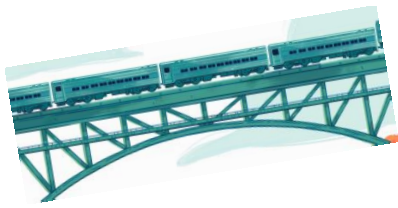
Here to There and Me and You

Using Informational Text



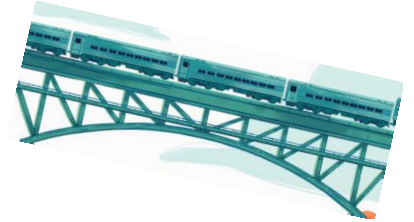
After reading *Here to There and Me to You*, use the information from the book to answer the questions below. If you finish early, write a few questions of your own on the back of the page.

- 1.) The author is the person that wrote the words in the book. Who is the author of *Here to There and Me to You*?
- 2.) The illustrator is the person that drew the pictures in the book. Who is the illustrator of *Here to There and Me to You*?
- 3.) What kind of bridge is the Hartland Bridge in Canada?
- 4.) What color is the Golden Gate Bridge?
- 5.) What river runs underneath the London Bridge?
- 6.) What passes under a drawbridge when it opens up?
- 7.) Where is the Puente de Piedra, known as the Bridge of Eggs?
- 8.) Banff National Park, in Canada, has the most types of what bridge in the world?
- 9.) What Three Countries Bridge only connects France to Germany, but what other country is nearby?
- 10.) P.T. Barnum led 21 animals across the Brooklyn Bridge to prove that it was safe. What animal did he take across the bridge?



Here to There and Me and You

Build a Bridge



The book *Here to There and Me and You* shows many types of bridges from around the world. Bridges are made out of different material depending on what they will be used for. Your goal is to create a bridge that is at least 12 inches long that will hold 3 bananas.

Materials

-Tape

-Glue

-Paper Clips

- Anything made of paper or cardboard such as:

toilet paper tubes

paper towel tubes

tissue boxes

cereal boxes

construction paper

shoe boxes

sticky notes

When you have finished building your bridge, draw a sketch below and list some facts about your bridge. Some facts may include how long it is, how wide it is, how much weight it can hold, who helped build it, and any other facts you can think of.

Facts about my Bridge:

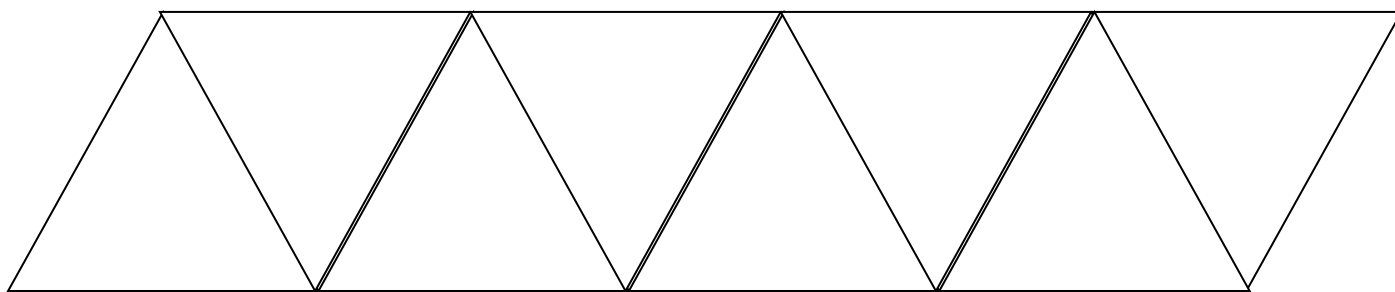


Here to There and Me and You
Create a Pattern on a Truss Bridge

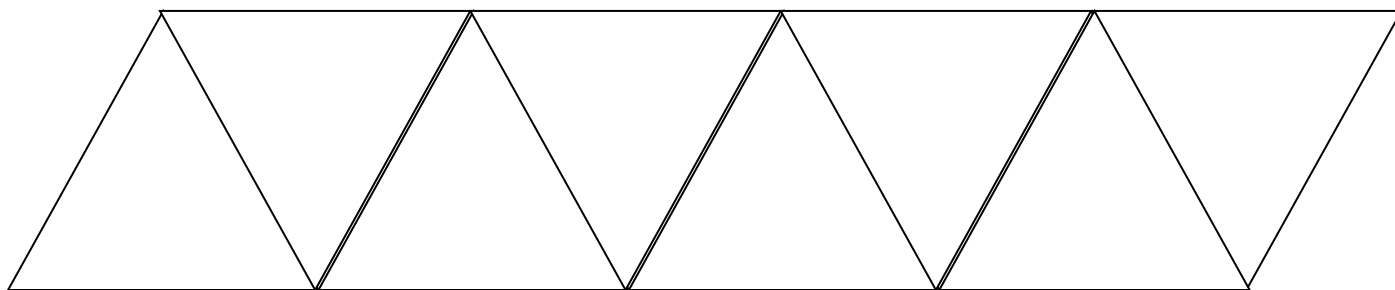


Truss Bridges are ones of the oldest types of modern bridges, and are often built with a series of triangular shapes. Use crayons or markers to create a pattern on each of the truss bridges below.

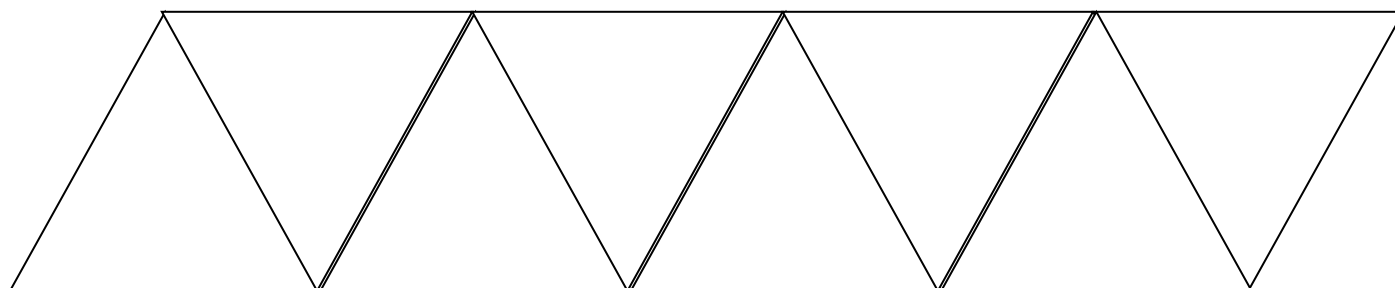
Create a pattern using 2 colors.



Create a pattern using 3 colors.



Create a pattern using 4 colors.





Here to There and Me and You



Bridge Research

After reading *Here to There and Me to You*, use the internet to research three different types of bridges. Record what you find below and draw a picture of the bridge in the box.

New River Gorge Bridge

Type of Bridge: _____

Location: _____

Year Opened: _____

Length: _____

Taylor-Southgate Bridge

Type of Bridge: _____

Location: _____

Year Opened: _____

Length: _____

Mackinac Bridge

Type of Bridge: _____

Location: _____

Year Opened: _____

Length: _____



Here to There and Me and You



Wildlife Data

In the book *Here to There and Me and You*, there is a picture of a wildlife bridge. Wildlife bridges, like those in Banff National Park in Canada, allow animals to cross roads safely. Below is a list of animals that you might see if you drive through Banff. Use the tally chart to help you create a bar graph.

Wildlife Tally Chart

Squirrels	
Deer	
Moose	
Bear	

Wildlife Bar Graph



Number of Animals	10			
	9			
	8			
	7			
	6			
	5			
	4			
	3			
	2			
	1			
	Squirrels	Deer	Moose	Bear

Type of Animal

Here to There and Me and You

Bridge to Anywhere

The book *Here to There and Me and You* reminds us that bridges do more than connect one place to another. They bring the whole world together. If you could build a bridge from your school to anywhere, where would it be?



- What kind of bridge would it be?
- What would it be made out of?
- What color would it be?
- What would travel across the bridge?
- What would travel under the bridge?



In the space below, write a short story about your bridge, answering the questions above. Then, draw a sketch of the bridge on the back of this page.



Here to There and Me and You



Measurement

Some bridges are short and some bridges are long. Some bridges are measured in feet, and some bridges are measured in miles. It is very important that while designing and building bridges, every measurement is exact. Try this measurement challenge!

Before measuring the objects, put them in order from shortest to longest: 1 is the shortest and 3 is the longest. Then, measure each object in inches and record your answer.

Example

3	Fork	8 inches
2	Marker	5 inches
1	Scissors	5 inches

Challenge #1

<input type="text"/>	Cup	_____ inches
<input type="text"/>	Book	_____ inches
<input type="text"/>	Toothbrush	_____ inches

Challenge #2

<input type="text"/>	Plate	_____ inches
<input type="text"/>	Toy Car	_____ inches
<input type="text"/>	Tissue Box	_____ inches

Challenge #3

<input type="text"/>	Pencil	_____ inches
<input type="text"/>	Shoe	_____ inches
<input type="text"/>	Calculator	_____ inches

Challenge #4

<input type="text"/>	Your Hand	_____ inches
<input type="text"/>		

Challenge #5

<input type="text"/>	Notebook	_____ inches
<input type="text"/>		

	Key	_____inches		Desk	_____inches
	Paper Clip	_____inches		Spoon	_____inches

Here to There and Me and You

Answers Key

Page 2 Informational Text

- | | |
|------------------------------|--------------------|
| 1) Cheryl Keely | 2) Celia Krampien |
| 3) Covered Bridge | 4) Orange |
| 5) River Thames | 6) Boats and ships |
| 7) Lima, Peru, South America | 8) Wildlife Bridge |
| 9) Switzerland | 10) Elephant |

Page 5 Bridge Research

New River Gorge Bridge

Type of Bridge: Arch
 Location: Crosses New River Gorge near Fayetteville, West Virginia
 Year Opened: 1977
 Length: 3,030 feet long (Arch of 1,700 feet)

Taylor-Southgate Bridge

Type of Bridge: Truss
 Location: Connects Newport, Kentucky to Cincinnati, Ohio
 Year Opened: 1995
 Length: 850 feet

Mackinac Bridge

Type of Bridge: Suspension
 Location: Connects the lower peninsula of Michigan to the upper peninsula

Year Opened: 1957
Length: 26,372 feet (5 miles)